



ŠIAULIAI

# Šiauliai - your City of the Sun

**Economic environment of the city,  
investment opportunities**

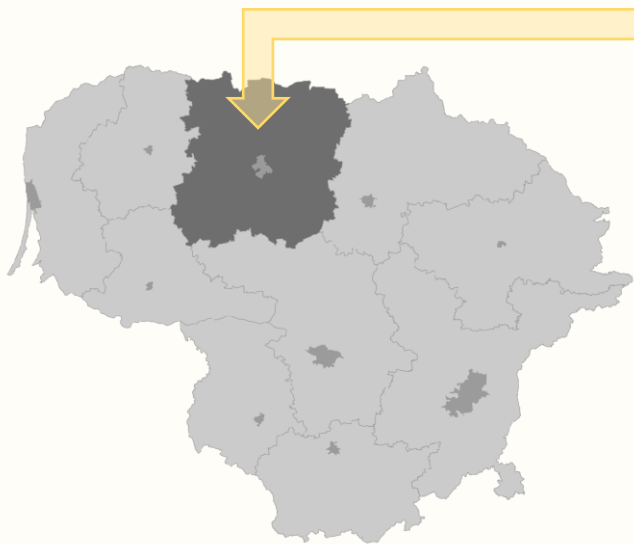
Municipal administration of Šiauliai city  
2024





ŠIAULIAI

# Why should you choose Šiauliai?



- Šiauliai – economical center of Northern Lithuania. Logistically it is a great spot: here you can find an International airport and well developed railway network, major port cities Klaipeda (165 km.) and Riga (128 km.) are close and comfortable to reach, capital city Vilnius is only 213 km. away.
- Municipality is ensuring good conditions for new investors and acting businesses and is constantly improving them. The mutual dialogue between both sides is a long term goal.
- Our greatest asset is our people. One of our strenghts is qualified workforce in electronics, metal processing, furniture production and logistics.
- Šiauliai has 112 581 inhabitants, and the whole region (7 municipalities) in total – 268 329 (2024). It is our labour force, consumers and future (students).
- Municipality is creating attractive environment for students and qualified work force, encouraging them to stay and create their lives in the City of the Sun.



# Industrial park



- Industrial park of Šiauliai city is equipped with infrastructure for greenfield investments.
- Šiauliai City Municipal Administration is granting assistance and mediation in the process of obtaining a construction permit and communicating with other institutions.
- Companies that invest at least EUR 600,000 per 1 ha and create at least 5 new workplaces are exempt from real estate tax and land rent for 10 years.

Since the establishment of the park various companies had invested here more than 74,2 mln. euros.  
Right now this territory contains 15 companies with over 7365 employees in total.



# Industrial park

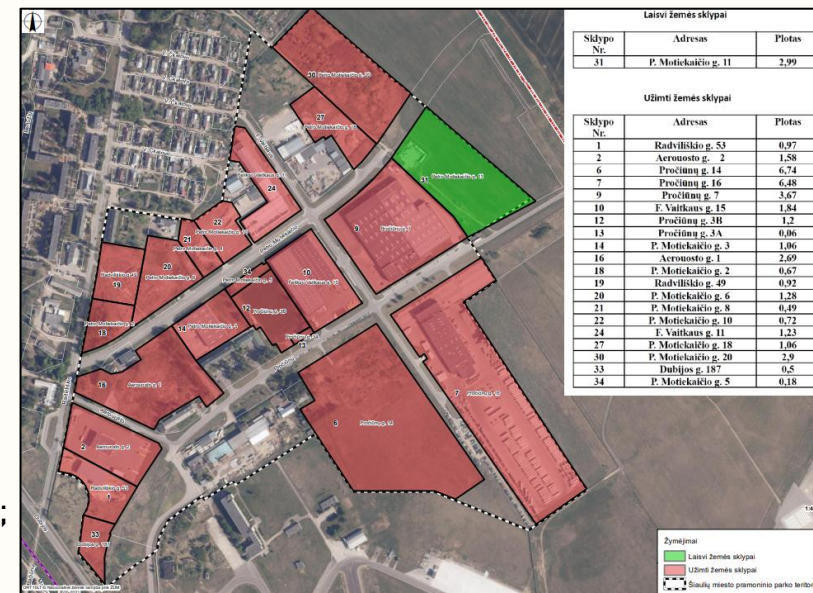


At this time industrial park can offer one free land-plot (1,0609 ha).

More information:  
 chief specialist Ilona Ringytė-Gedvilė,  
 phone +370 600 96 050,  
 email: [ilona.gedvile@siauliai.lt](mailto:ilona.gedvile@siauliai.lt).

## List of operating companies:

- UAB „Lietmeta“ (Ltd.);
- UAB „ROL Lithuania“(Ltd.);
- UAB „Vonin Lithuania“(Ltd.);
- UAB „Krovлита“ (Ltd.);
- UAB „Scania Lietuva“ (Ltd.);
- UAB „Metmega“ (Ltd.);
- UAB „Aukstata“ (Ltd.);
- UAB „Ltintus“ (Ltd.);
- UAB „Laumžirgiai“ (Ltd.);
- UAB „Formula Air Baltic“ (Ltd.);
- UAB „JW Trade“ (Ltd.);
- UAB „Agroconsult LT (Ltd.);
- UAB „Intelligent solar“ (Ltd);
- UAB „Vibaltpega“ (Ltd);
- UAB „Ecovia Baltica“ (Ltd).



# Free economic zone (FEZ)

Žemės sklypai yra pritaikomi prie jūsų poreikių



More information: <https://siauliaifez.lt/about-us/>

- The whole FEZ territory is 132 ha. The land-plots vary from 1 to 25 ha. They can be joined or split according to investor's needs.
- The territory is close to the main transportation routes and next to the Šiauliai International airport.
- Companies that invest here are not paying the real estate tax, no corporate tax during the first 10 years and only 50% of corporate tax over the next 6 years if their investment in fixed assets is no less than 1 million euros; their dividends are not taxed in cases established by the Law of the Republic of Lithuania on Corporate Income Tax.
- At the moment this territory contains 6 companies with more than 25 mln. euros of investments and over 300 employees in total.



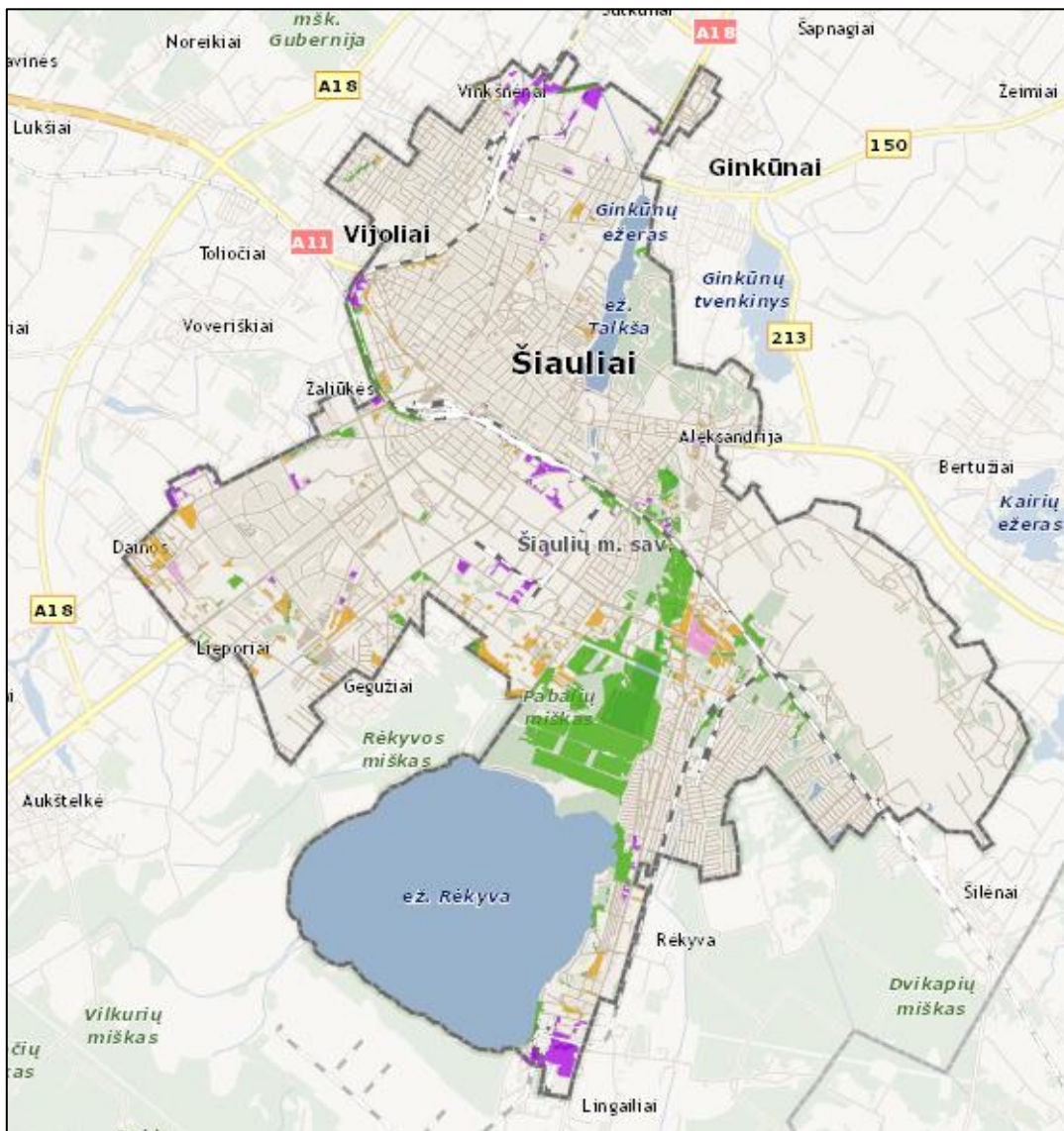
# Railway infrastructure in industrial park and FEZ



- In order to create good conditions for companies to operate in the Šiauliai Industrial Park and Free Economic Zone and effectively organize loading and logistics processes, was laid a railway track.
- By using railway track companies could transport both raw materials and production. Also, all these goods can be unloaded/loaded at the Šiauliai public logistics intermodal (multimodal) terminal.

The railway infrastructure will open even more possibilities for businesses.

# Business oriented territories



- After the inventorisation of unused territories in Šiauliai city, some new land-plots are going to be provided for business needs. Right now the legal documents of these land-plots are being handled and soon they will be offered for rent to the business developers.
- The land-plots:
  - 51 plot up to 0,5 ha;
  - 32 plots in between 0,5 and 3 ha;
  - 4 plots bigger than 3 ha.

More information:  
chief specialist Ilona Ringytė-Gedvilė,  
phone +370 600 96 050,  
email: [ilona.gedvile@siauliai.lt](mailto:ilona.gedvile@siauliai.lt).

The map of the territories: [here](#).



# The attraction of high profile professionals



Companies in Šiauliai city have more chances to attract required professionals: municipal administration can provide financial support up to 6000 EUR per one person.

Main requirements:

- The contract of employment has to be made not earlier than 3 months to submission of the funding request;
- The employed persons profession should be indicated in the list, approved by the municipality: „Professions, which require high professional qualifications and which are lacking in organizations, that are operating in the territory of Šiauliai city“.

The financial support can be used optionally (for one of the purposes):

1. The coverage of housing rent fee for a period of two years (in Šiauliai city or district);
2. Settlement costs: down payment for housing purchase; mortgage loan or housing lease payments; to purchase furniture, household appliances or a car.
3. Settlement costs, without checking the use of the financial support.

More information:

chief specialist Jūratė Marcišauskienė,

Phone: +370 41 596277,

Email:

[jurate.marcisauskiene@siauliai.lt](mailto:jurate.marcisauskiene@siauliai.lt)



# The „one stop shop“ principle for investors



- There is one dedicated specialist that is responsible for all communication process and helps in every step from start to end.
- This service in Šiauliai municipal administration is being handled by Department of economics.  
Responsible person:  
chief specialist Ilona Ringytė-Gedvilė,  
phone +370 600 96 050,  
email: [ilona.gedvile@siauliai.lt](mailto:ilona.gedvile@siauliai.lt).
- Feel free to contact if you have any questions about this subject.

The principles of this service: efficiency, simplicity, attention.

# Šiauliai international airport

## UNIQUENESS IN BALTIC REGION:

- Šiauliai International Airport is the only airport in the Eastern part of the European Union to apply no restrictions on noise in the daytime and at night.
- The largest in the Baltic's runway along with the state-of-the-art equipment allow servicing even the heaviest aircraft 24 hours a day year-round under the most complicated meteorological conditions.
- The only airport in Baltic region which can be used to export live cargo.
- *Aircraft ground handling services,*
- *passenger handling services,*
- *cargo handling services,*
- *customs,*
- *customs warehouse,*
- *border inspection post,*
- *veterinary border inspection post,*
- *Other services provided by investors.*



Šiauliai international airport is open for various business ideas.

More information:

<https://www.siauliai-airport.com/en/>



ŠIAULIAI

More information about the economical and investment environment in Šiauliai city:

<https://www.siauliai.lt/en/page/view/647>

Department of economics:

<https://www.siauliai.lt/en/structure/view/department-of-economics>

